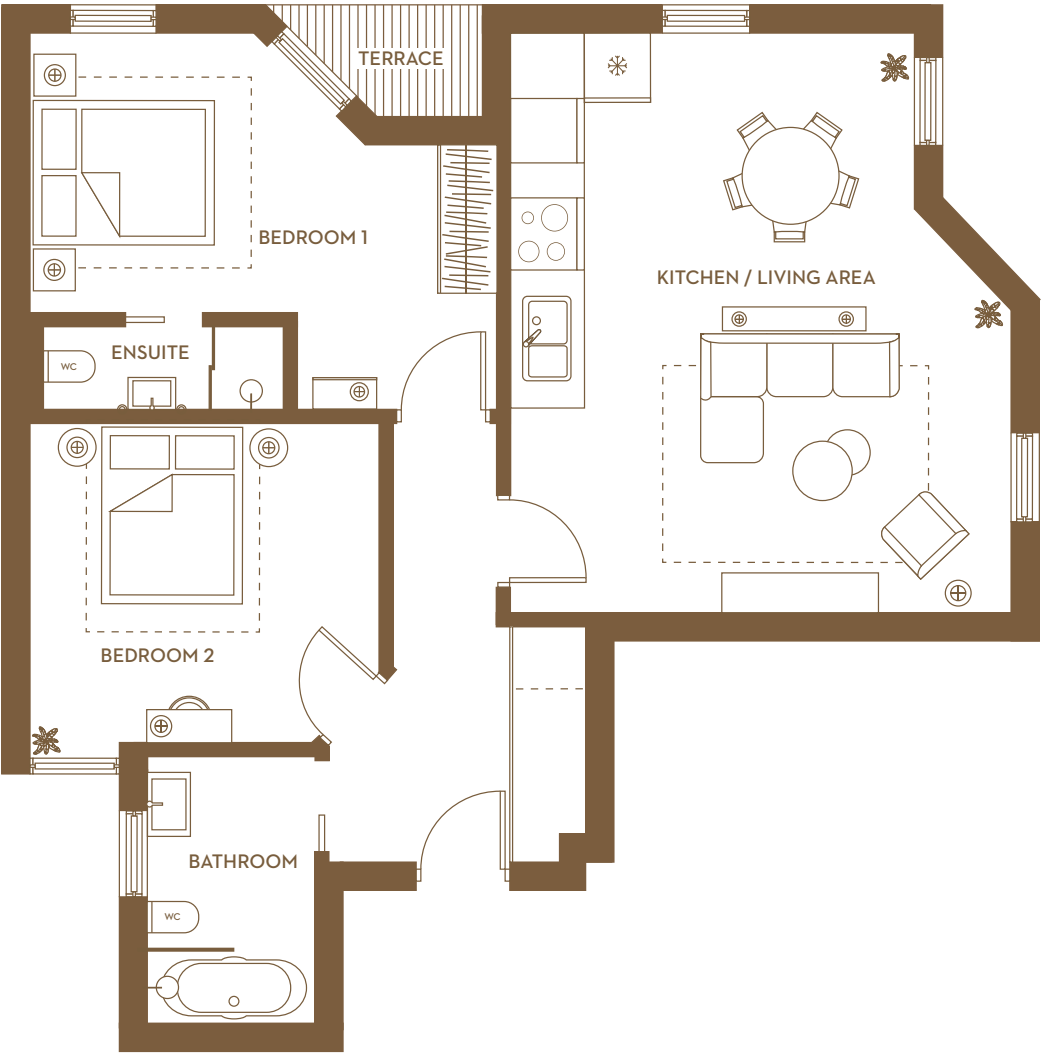


N° 6
2 Bedroom Apartment
Total Area 75m² / 810 sq. ft.

Kitchen / Living Area	6m x 5.1m	19'6" x 16'6"
Bedroom 1	2.9m x 5m	9'4" x 16'4"
Ensuite	0.9m x 2.5m	3' x 8'3"
Bedroom 2	3.4m x 3.7m	11' x 12'1"
Bathroom	2.8m x 1.7m	8'6" x 5'6"
Terrace	1.9m ²	27.2 sq. ft.



FLOOR PLANS & CGIs

Floor plans are intended to give a general indication of the proposed floor layout and refer to approximate measurements only and are subject to changes. Photos, computer generated images (CGIs) and drawings contained in this website are indicative only. Local maps and illustrations of the site are not to scale, landscaping, gradients and street furniture may differ to what is shown and should not be relied upon as depicting the final as built development or apartment. All sales remain subject to contract.

